
H.264 NETWORK Embedded DVR

USER MANUAL



CONTENT

1 INTRODUCTION.....	3
1.1 MAIN FEATURE.....	3
1.2 PRODUCT FEATURES	3
1.2.1 PARAMETER	3
1.2.2 BASIC WORKING PARAMETER	5
1.3 ENVIRONMENT ADAPTABILITY.....	5
2. DEVICE OPERATION MANUAL.....	6
2.1 REMOTE KEY INSTRUCTION	6
2.1.1 REMOTE CONTROL.....	6
2.1.2 MOUSE (OPTIONAL) OPERATION	7
2.1.3 MENU TREE	8
2.2 SYSTEM OPERATION	9
2.2.1 USER LOGIN	9
2.2.2 GUI OPERATION	10
3. IE OPERATION.....	24
3.1 FEATURE	24
3.2 USER LOGIN	25
3.3 OPERATION INTERFACE.....	26
3.3.1 LIVE.....	26
3.3.2 REPLAY	27
3.3.3 SETUP	29
4. DVR INSTALLATION GUIDELINE.....	33
4.1 PRODUCT OVERVIEW	33
4.2 HDD INSTALLATION.....	36
5. FAQ.....	37

1 INTRODUCTION

1.1 MAIN FEATURE

This DVR is a 4 channel CIF, HD1, D1 resolution digital video recorder. It has local recording, playback, support triple code remote network surveillance, data backup, parameter setting, motion detection and USB mouse.

1.2 PRODUCT FEATURES

- ✧ H.264 compression
- ✧ Two USB interface, USB2.0 for data backup, USB1.1 for mouse operation.
- ✧ 3.5" SATA HDD.
- ✧ Special file system for security.
- ✧ 16 bit color translucent user-friendly GUI, with notes for selected menu items
- ✧ Optimized four channel simultaneously playback
- ✧ Double level user management
- ✧ Support the live view, parameter setting and copy playback video via network.

1.2.1 PARAMETER

Item	Device Parameter	Specification
System	Language	Chinese/English
	GUI	Graphic menu(OSD Menu)
	password	user password, administrator password
Video	Video in	4ch composite video input 1.0Vp-p, impedance75Ω, BNC
	Video out	1ch composite video output 1.0Vp-p, impedance75Ω, BNC
	Video display	4ch:1/4channel switch
	Video standard	PAL, 25f/s, CCIR625line, 50scene NTSC, 30f/s, CCIR525line, 60scene

Audio	Audio input	4ch audio input, impedance600Ω, RCA
	Audio output	1ch audio output, impedance600Ω, RCA
	Basic electricity output	Linearity electricity
	Record style	Audio video recorded simultaneously
	Audio compression	ADPCM
Picture proceeding and store	Picture compression	H.264
	Picture resolution	CIF/HD1/D1
	Streaming style	ISO14496-10
	Audio style	ADPCM
	Video code rate	CIF: 384~768 Kbps(optional) HD1: 512~1024 Kbps(optional) D1: 512~1024 Kbps (optional)
	Audio code rate	32KB/s
	Data storage	SATA HDD storage(optional)
Connector	Network interface	RJ45, 10M/100M
USB	Mouse	USB1.1,
	U-disk	USB2.0
VGA	VGA	Unavailable
Software	IE Web Browse	Remote view, record download, parameter settings and etc.
Software upgrade	Support USB firmware upgrade	
others	voltage input	AC:110~240V
	Voltage output	DC: 19V@3.42
	Power	60W without HDD
	Working temperature	-10----50℃

1.2.2 BASIC WORKING PARAMETER

Item	Parameter	description
Voltage input	19V	DC 19V
Voltage output for camera	12V (+/-0.2)	12V, 2A
Video impedance input	75Ω	75Ωeach channel.
Video output	1Vp-p	1Vp-p CVBS signal
SATA HDD		One SATA with all capability
Working temperature	-10----50°C	Under normal conditions

1.3 ENVIRONMENT ADAPTABILITY

For safety while using the DVR and to prolong device life, please pay attention to the following details:

- 1) When installing device, please comply with all the electric product safety criteria.
- 2) Power and ground:
 - ◆ Do not touch the power and DVR with a wet hand
 - ◆ Do not drop liquid on DVR
 - ◆ Do not put any object on DVR
 - ◆ Please use soft dry cloth to clean DVR; do not use chemical impregnant.
 - ◆ The Device will have voltage before startup if the power line is connected to power source.
 - ◆ Please unplug power line from power source if the Device is not intended to be used for a prolonged time.

2. DEVICE OPERATION MANUAL

In device operation, the enter key on remote control has the same function as left click of the mouse.

2.1 REMOTE KEY INSTRUCTION

2.1.1 REMOTE CONTROL



Handheld IR Controller Key Functions:

【0—9】 keys: During setup, number keys are used to input values. For viewing channels 1, 2, 3 and 4, use 1, 2, 3 and 4 on numeric keypad respectively.

▲, ▼: Up, Down directional keys: Move selection up and down in setup menu.

◀, ▶: Left, Right directional keys: Move cursor left or right in setup menu.

【QUAD】 : Switch 4 Channels;

【FWD】 : Fast forward the video while playback. press **【PLAY】** to return to normal speed;

【REV】 : Reverse the video while playback, press **【REV】** to switch, press **【PLAY】** to return to normal speed;

【POWER ON】: Reset the DVR to Power on and Power off mode. (standby and start up);

【LOGIN/LOCK】 : If the security is enabled in the setup, use LOGIN/LOCK key to enter the user setup. It is important to remember the password due to without restoration function. Log in (to enter into “User ID select” and “Password” input interface) and lock functions (To exit setup and operation)

【OSD】 : Press OSD for main menu;

【PTZ】 : Not supported;

【EXIT】 : Exit to the preview or return to the last menu;

【RECORD】 : Start manual record

【STOP】 : Stop manual record

【EXTRA】 For future use

2.1.2 MOUSE (OPTIONAL) OPERATION

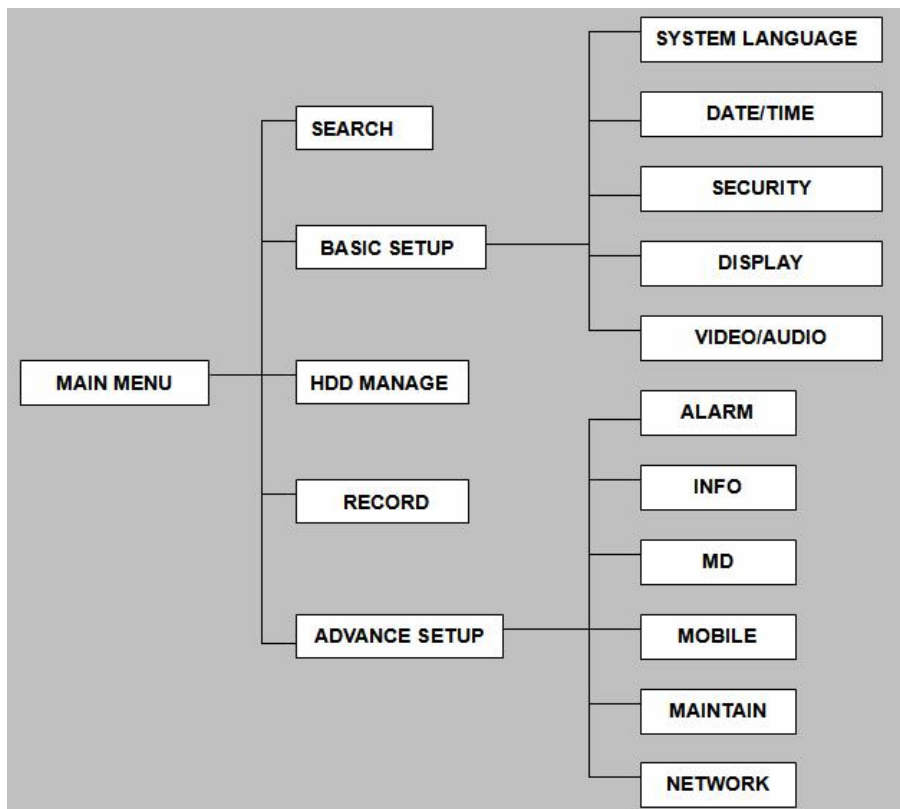
You can also use the mouse to operate menu without IR remote control. (The operation is the same as PC Windows). Please insert the mouse into USB 1.1.

Click right key	Enter into main menu: Click the right key on the live view.
	Exit the present menu: It will not save the settings if clicking the right key to exit.
	Exit the playback interface: Click the right key to exit during playback.
Click left key	Click the left key to enter into the setting interface.
	Click the left key to zoom in the window on the live view and playback video. Double click the left key will exit to the live view and playback multi-window interface.
	1. Volume adjustment, color adjustment setting. It is for setting volume and color adjustment for single channel. If it is multi-window, please use the left key to select the single window. 2. The remark when click the left key for volume adjustment, color adjustment is as follow: a. There is a sticker to show the volume on the volume adjustment interface. Move the mouse to the corresponding position and click the left key. The right side of sticker will show the volume, click "x" to exit. b. Color adjustment can refer to the volume adjustment interface operation.
	When there are many options in the option frame, click left key to see down-pull menu.
	Click the left key on the playback interface can make >> forward function, << rew function, >> Slow play function, > frame play function, > Play function, X exit function.

Click left key	<p>1. In the input frame, clicking the left key can activate the keyboard. The number, symbol, English can be input by clicking the mouse.</p> <p>2. Pinyin also can be input by the soft keyboard when enter Chinese, the method is the same as remote control. You can use the left/right key to turn over the page when check on Pinyin/Chinese word.</p> <p>3. When inputting number, clicking the right key will pop up the number soft keyboard; then use the left key to select the corresponding value. Click the left key to exit the number keyboard.</p>
Mouse move	<p>1. Pressing the left key to move the mouse will adjust the parameter on the volume and color interface. The corresponding parameter will be displayed at the same time.</p> <p>2. In the Motion Detection setting interface, you can use the left key to drag the frame to set the motion detection area.</p>

2.1.3 MENU TREE

You can control the DVR by the menu operation. The following tree diagram shows the menu structure and more details will be shown in next chapter.



2.2 SYSTEM OPERATION

2.2.1 USER LOGIN

1. START-UP

Connect the DC19V/3.42A adapter to DVR. When start up the DVR, 【POW】 LED will be on and 4 images will be displayed on the screen. If the DVR is setup for motion detection or time record, the system will record automatically and the corresponding LED will be on showing the system is working normally.

Remark:

- 1) If there is no HDD in device, or the device cannot read the HDD, or the HDD is not formatted, it will display an 【H】 in the video preview interface.
- 2) You must format the HDD in the DVR before using. The steps are as follows: menu > HDD management > format. After formatting, the system will restart.

2. SYSTEM LOGIN

You can login from the USER LOGIN window as follow. Input device ID and user password via numeric key-board. You can access to main menu by pressing 【Apply】 if the password is enabled.

Remark: Default device ID is: 00000, Default password is close. For your convenience and system safety, you can setup the user password and change the device ID in the Setup. Administrator has all authorities, while operator has limited authorities to only watch and playback:



Device ID: You just need to enter the device ID as the right frame.

Password: enter the admin password or user password.

2.2.2 GUI OPERATION

The main menu include “SEARCH”, “RECORD”, “HDD”, “BASIC”, “ADVANCE”, and “Exit”.



Remark: To make the setting of submenu valid, you must press “APPLY”. It will not be workable if exit directly. This DVR has a special feature: Explanation and information will be showed automatically when you move the cursor on the Menu.

1 RECORD SEARCH

Move the cursor to **【RECORD SEARCH】** (Icon highlighted when selected) ,press **【Enter】** to enter into the setting interface.

There are three methods of searching record.

Method 1: playback by date

Date input: You can adjust the searching date and time, press **【Enter】** or input the number directly to adjust the year, month and day. Input time in the next box, click “play” and you can see the recording video.

Method 2: playback by recording status:

Input the date, click **【search】** and you can see the recording status on this date.



Instruction:

1. **MONTH:** It will show all the recording status in this month. Green means normal recording, Red means alarm recording, Grounding means no recording. Click any date in this frame will search the recording status of that day, the searching result will be showed in the below date frame.
2. **DATE:** It will show all the recording status in this day, you can playback the recorded files in any period by clicking the corresponding period.

Method 3: playback by file list:

Input the searching date, click “SEARCH” and you can see the recording status. Click an exact day and then click “detail file” and you can see the interface of “detail file”.

CHANNEL: There are CH1, CH2, CH3, CH4 and QUAD, total 5 options. Press **【Enter】** and you can change the channel to be displayed.

TYPE: There are 3 options: all, normal and alarm. Press **【Enter】** and the content will be displayed in a list.



Instruction:

1. **【FILE LIST】**, “CHANNEL” is the recording file belongs to the corresponding channel, “SIZE” is the displaying size of this file (Unit: MB) , “TYPE” is the displaying type of

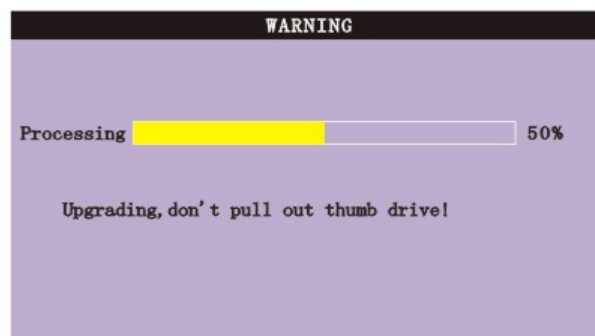
the recording file : There are two types: normal and alarm. Pressing “BACKUP” button will transfer the selected files to USB storage;

2. After moving the cursor up and down and selecting the files, press **【APPLY】** to enter into playback interface。 If all channels have recording files, it will playback all windows at the same time;
3. If setup as “on” in the **【RECORD TIME】**in **【BASIC SETUP】**, it will show the date/time when playing back recorded file; If setup as “off” it will not display time;
4. During playback, press **【SLOW】** to play slowly; press **【FORWARD】**、**【REVERSE】** to speed、 reverse play; press **【PAUSE/STEP】** to pause and frame by frame play; press **【Exit】** to exit from playback and return to the former menu;
5. When finish, it will return to the file list interface.

2 BACKUP

You can use USB for backup by inserting USB device into the USB2.0 port before backing up files. It also supports USB OTG.

You can select the recording file by direction keys, press **【Enter】** means the selected is confirmed (There is a “√” at the end of the selected recording files) , press **【Enter】** again the “√” will disappear which means the selected is cancelled. You can start exporting the selected recording files by pressing **【BACKUP】** , as follow:



Instruction:

1. When the space in backup device is less than recording file, the system will prompt “Space not enough”.
2. You can remove USB device directly when backup is finished

3 RECORD MODE

Move the cursor to **【RECORD】** (Icon highlighted when selected) . Press **【Enter】** to enter the setting interface. Press **【Confirm】** and enter the setup interface. You can use direction keys and cursor to change the options.



CHANNEL: ON: Means the channel is enabled to record

RESOLUTION: Setup resolution and code rate for recording, there are three options: HIGHEST, HIGH, NORMAL, corresponding to D1、 HD1、 CIF resolution.

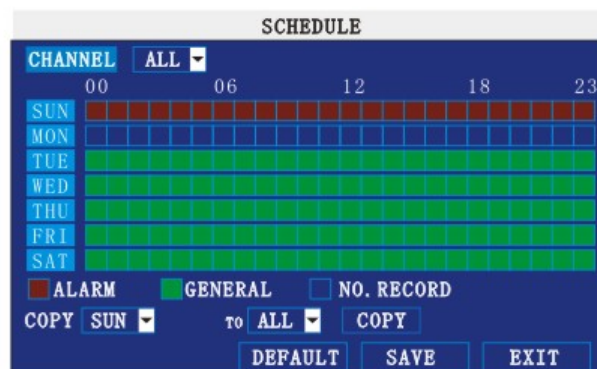
QUALITY: There are three options: BEST, FINE AND NORMAL, corresponding to HIGHEST, HIGH AND NORMAL data stream standard.

AUDIO: ON: Means the audio recording for all channels are enabled, OFF: Means audio recording is disabled.

REC.MODE

POWER UP: Means the device will start recording when it starts up

TIME: Recording as scheduled; you can setup schedule as you want as follow.



CHANNEL: You can select all channels or just one channel (Blue means selected)

DAILY: There are three modes: ALARM, NORMAL, and NO REC. If you select one mode,

the whole day will be recorded at that mode. You can cancel recording by pressing【Enter】 button; Grounding means do not record, different color means different record mode: Red means alarm record, Green means normal record, grounding means no record.

RECORD SIZE: There are 15min, 30min, 45min, 60min four options; it will pack as the mode you selected.

Scroll to **APPLY** and press **ENTER** to save the new settings.

4 HDD MANAGEMENT.

Move the cursor to **【HDD】** (Icon highlighted when selected) , press【Enter】to enter into the setting interface, and you can use direction keys or cursor to change the options.



HDD STATUS: There are three status available, normal, un-format, No HDD. If HDD cannot run normally (including unformatted and no HDD) , there will be a **【H】** displayed on video live view.

OVERWRITE: ENABLE: when HDD space is less than 4G, it will delete earliest recording files, and it will stop deleting when the space is 10G; DISABLE: When HDD space is less than 500M it will stop recording, and a prompt will display in live view: “please shutdown and replace HDD”.

FORMAT: Move cursor to select device and press **【APPLY】** to start formatting.

5 BASIC SETUP

Move cursor to select “BASIC SETUP” (The big icon means select ok)and press **【ENTER】** to enter into the system language setup interface.



Basic setup includes system language, time/date, password security, display, video/audio and exit.

6 SYSTEM LANGUAGE SETUP

Move cursor to select “system language” (The big icon means select ok) and press **【ENTER】** to enter into the system language setup interface.



System language is optional, including Chinese and English. You can choose the language you want.

Remark: The device will restart when you finish system language setup.

7 DATA/TIME SETUP

Move cursor to select “date/time” (The big icon means select ok) and press **【ENTER】** to enter into the date/time setup interface.

DATE: Setup system date via numeric key.

DATE FORMAT: Press ENTER to switch the date patterns: there are YY-MM-DD and MM/DD/YY for your selection.

TIME: Setup system time via numeric key.

TIME FORMAT: Press ENTER to switch the time patterns; there are 12 HOURS and 24 HOURS for your selection.

Remark: You must press **【APPLY】** to save after you modify the time and date, modification will not be saved if you exit directly.

DST: Still under construction.

8 PASSWORD

Move the cursor to **【PASSWORD】** (Icon highlighted when selected) , press **【Enter】** to enter into the setting interface.

DEVICE ID: Press number key to setup the ID

PASSWORD: Press **【APPLY】** to start or close the user password. If it is “ENABLE”, you have to input password when login, otherwise, you can access main menu directly.

USER PASSWORD: Press number key to setup.

ADMIN PASSWORD: Press number key to setup.

NETWORK PW CLEAN: Select and apply will initialize the IE browser password.

9 DISPLAY SETUP

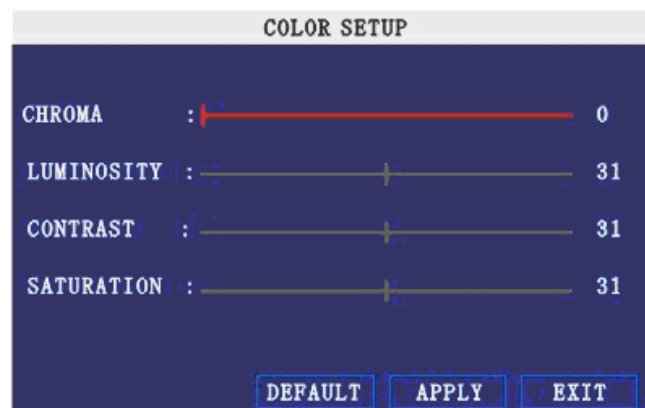
Move the cursor to **【BASIC SETUP】** (Icon highlighted when selected), press **【Enter】** to enter into the setting interface.



NAME: press **【Enter】** to enter into the setting interface.

POSITION: Name location is optional. You can press **【Enter】** to switch from bottom left, top left, bottom right, top right and OFF.

COLOR: press **【Enter】** to enter into setting interface as follow:



Press **【Enter】** or **【+】** **【-】** key or directly drag the cursor to setup colors, including chroma, brightness, contrast and saturation, press **【APPLY】** to save the parameters once the setup is completed.

PREVIEW: ON: Means the channel is allowed to view the live mode, OFF means not.

PREVIEW TIME: ON: Means insert clock in live view, OFF means not.

RECORD TIME : ON: Means insert clock in record file, OFF means not.

10 VIDEO/AUDIO SETUP

Move the cursor to **【VIDEO/AUDIO SETUP】** (Icon highlighted when selected) , press **【Enter】** to enter into setting interface.



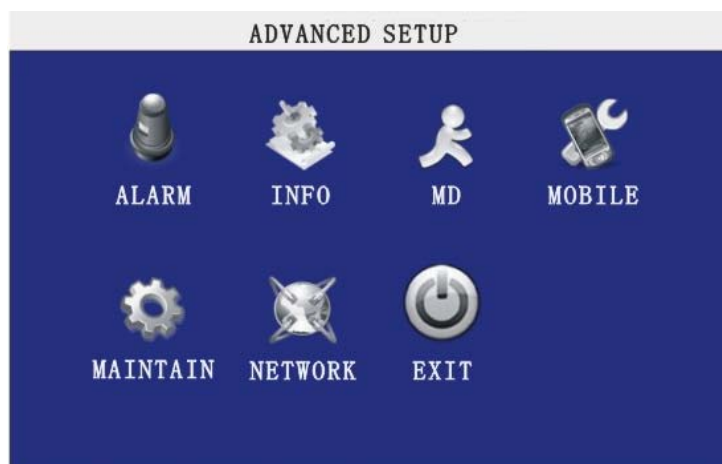
VGA RESOLUTION (optional)

CAMERA SYSTEM: press **【Enter】** to select camera system: PAL or NTSC.

VOLUME SETUP: move cursor to **【VOLUME SETUP】** , then press **【Enter】** to access volume setup interface, press **【+】** **【-】** or number keys or directly drag the cursor to adjust the volume.

11 ADVANCE SETUP

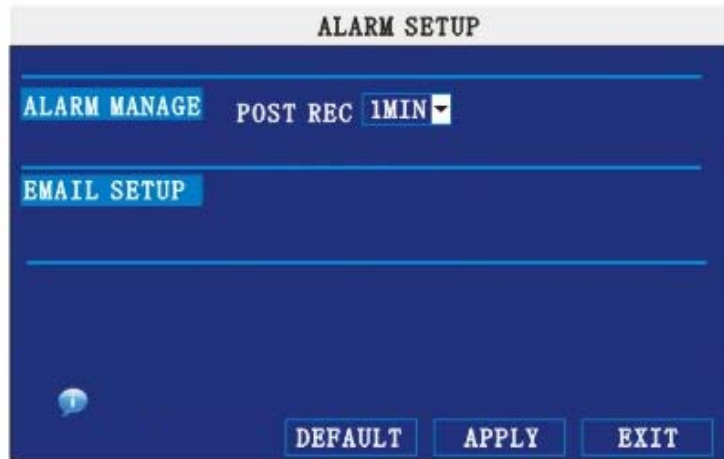
Move the cursor to **【ADVANCE SETUP】** (Icon highlighted when selected) , press **【Enter】** to enter into setting interface. Picture as below:



Advanced Function includes Alarm settings, system information, Motion detection, mobile phone monitoring, system maintenance and network setting.

12 ALARM SETUP

Move the cursor to **【ALARM SETUP】** (Icon highlighted when selected) , press **【Enter】** to access setting interface.

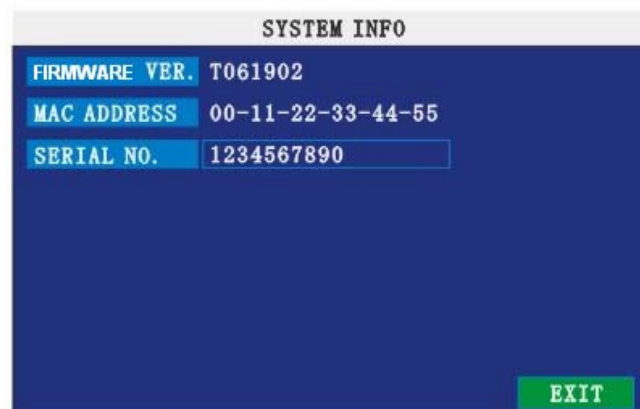


ALARM MANAGE:

POST REC.: Post recording time setup: 30 seconds, 1 minute, 2 minutes and 5 minutes

13 SYSTEM INFO

Move the cursor to **【SYSTEM INFO】** (Icon highlighted when selected) , press **【Enter】** to access setting interface. This interface includes: firmware version, MAC address, serial number.



14 MOTION DETECT

Move the cursor to【MOTION DETECT】(Icon highlighted when selected), press【Enter】 to access setting interface.

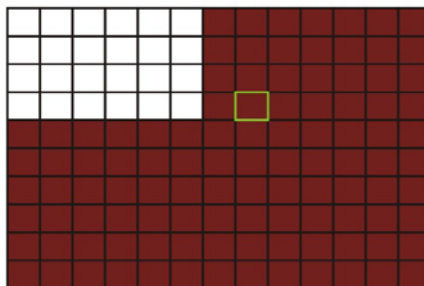
MOTION DETECT				
MD CHANNEL	CH1	CH2	CH3	Ch4
STATUS	ON ▾	OFF ▾	OFF ▾	OFF ▾
SENSITIVITY	4 ▾	3 ▾	2 ▾	3 ▾
MD AREA	SETUP	SETUP	SETUP	SETUP

DEFAULT APPLY EXIT

STATUS: Each channel has corresponding channel switch, press 【Enter】 to turn on or turn off the motion detection for each channel.

SENSITIVITY: each channel has corresponding sensitivity setting; including four standards: higher, high, medium and low, press 【Enter】 to switch.

MD AREA: each channel has corresponding regional motion detecting setting, move the cursor to corresponding 【setting】, press 【Enter】 to enter regional setting interface, red area means motion detection is activated, transparent block means motion detection is not activated.



Press the direction key on remote control to move cursor along the small pane: position of cursor is indicated by green frame. Press 【Enter】 to select or cancel motion detection of this small pane. When setup is finished, press 【exit】 to go back to MD setup interface and settings will be saved automatically

Remark:

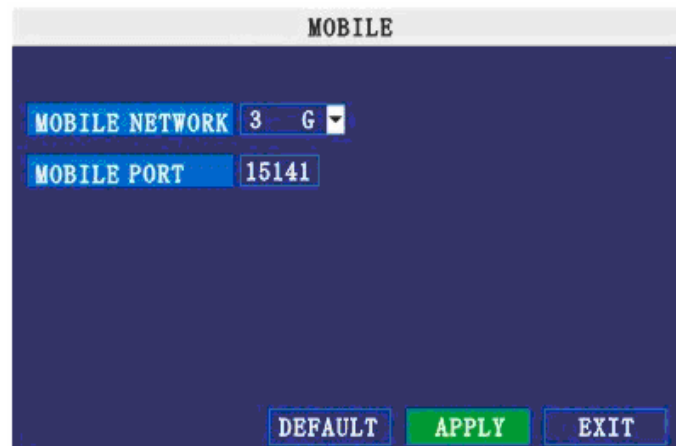
IR Operation: press [Menu] key to select or cancel full screen.

Mouse operation: click left and drag the frame to setup the region for motion

detection.

15 MOBILE

Move the cursor to **【MOBLE】** (Icon highlighted when selected) , press **【Enter】** to enter into setting interface. Picture as below:

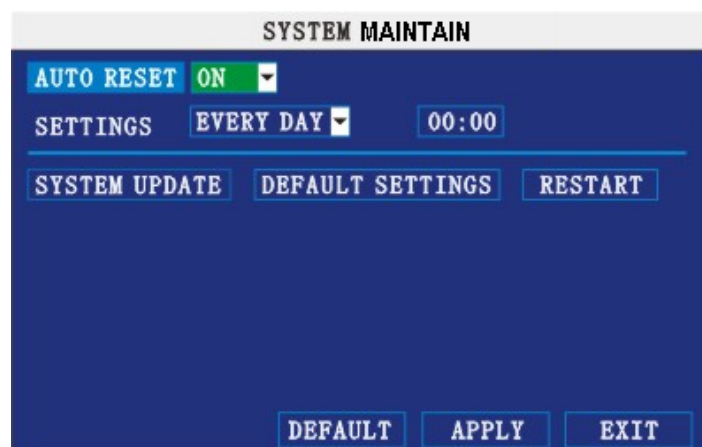


MOBILE NETWORK: Select different mobile network from the options of 3G, 2.5G and 2.75G; press [APPLY] to choose different network.

MOBILE PORT: Input the correct mobile port; press [APPLY] to confirm.

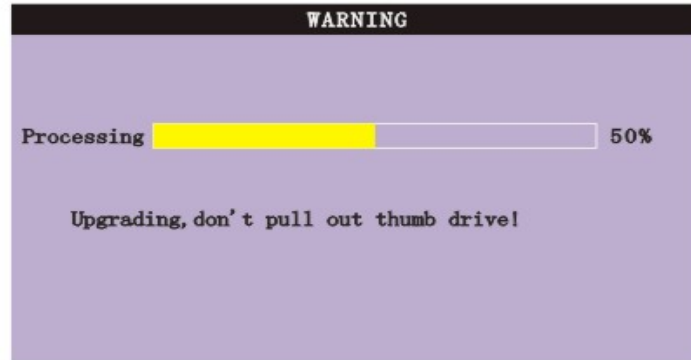
16 SYSTEM MAINTAIN

Move the cursor to **【SYSTEM MAINTAIN】** (Frame turns red means selected), press **【Enter】** to enter into system maintain setup interface.



AUTO RESET: When it is on, you can setup the time for device to restart.

SYSTEM UPDATE: Copy the update file to the root directory of a thumb driver, and then insert it into USB 1.0. Press [Enter] to upgrade the firmware and it will display the process of the System upgrade as follow:



DEFAULT SETTINGS: Restore all the settings to factory settings.

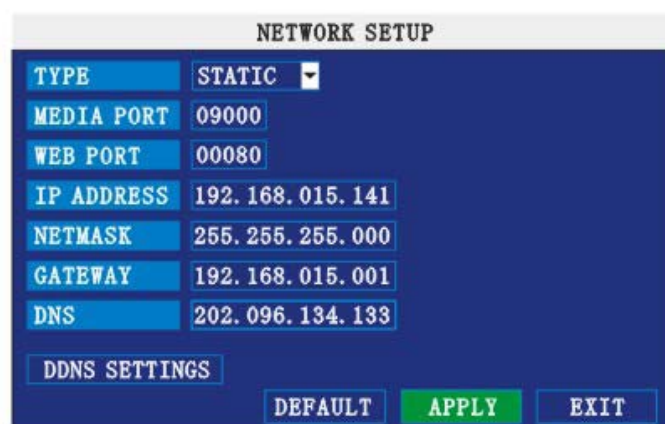
18 NETWORK SETUP

Move the cursor to [NETWORK SETUP] (icon highlighted when selected), press **【Enter】** to access setting interface.

TYPE: Options in Type include PPPOE, DHCP & Static.

◆ 1 Static

Select [Static] in the type, press [Enter] to access the interface as below:



MEDIA PORT: transfers video data between client and device.

WEB PORT: setup the port of IE browser via HTTP.

IP ADDRESS: setup the IP address, and press [Enter] input numbers to fill IP

address.

NET MASK: press [Enter] input numbers to fill in net mask.

GATEWAY: press [Enter] input numbers to fill in default gateway.

◆ 2 DHCP

Select the DHCP, and enter into the interface as follow.

The screenshot shows a 'NETWORK SETUP' window with a dark blue background and light blue text. At the top, the title 'NETWORK SETUP' is centered. Below it, there are several fields: 'TYPE' is set to 'DHCP' with a dropdown arrow; 'MEDIA PORT' is '09000'; 'WEB PORT' is '00080'. There is a 'DNS' field with the value '202.096.134.133'. Below these is a 'DDNS SETTINGS' button. At the bottom, there are three buttons: 'DEFAULT', 'APPLY' (highlighted in green), and 'EXIT'.

MEDIA PORT: same as static setup

WEB PORT: same as static setup.

NOTE: restart system when select DHCP and it will automatically connect with DHCP server. It will allot IP address when connection is ok and the address will be showed on the interface.

◆ 3 PPPOE

Select the PPPOE, and enter the interface as follow.

The screenshot shows a 'NETWORK SETUP' window with a dark blue background and light blue text. At the top, the title 'NETWORK SETUP' is centered. Below it, there are several fields: 'TYPE' is set to 'PPPOE' with a dropdown arrow; 'MEDIA PORT' is '09000'; 'WEB PORT' is '00080'. There are two empty input fields for 'PPPOE NAME' and 'PASSWORD'. There is a 'DNS' field with the value '202.096.134.133'. Below these is a 'DDNS SETTINGS' button. At the bottom, there are three buttons: 'DEFAULT', 'APPLY' (highlighted in green), and 'EXIT'.

MEDIA PORT: Port for private protocol of DVR and PC, default: 9000. If this port of computer is applied by other server, please change to other free port.

WEB PORT: Http port. Default: 80. If admin change WEB port to: e.g. 8088, port No. should be added behind IP, http://192.168.15.145:8088 should be input into IP of IE.

IP address: Fill in IP address according to the net of DVR;

PPPOE username and password: enter the username and password provided by the internet service. Apply and reboot the system. After rebooting, the device will save it and set the PPPOE as default network type. The IP address will be automatically configured as dynamic IP of WAN.

4 DDNS

Move the cursor to DDNS and press [Enter] to enter the interface as follow:



DDNS: Options are [ON/OFF]. If there is a DDNS service, setup to ON.

SERVICE: Four services to select: 3322, dyndns, perfecteyes, LTSCCTV.

HOST NAME: Input the name of the host server.

USERNAME: Input the name of the user.

PASSWORD: Input the password.

3. IE OPERATION

3.1 FEATURE

Install the software through the IE browser of OS and you can operate the network remotely and conveniently. DVR supports C/S, B/S, and visit in LAN and WAN, also supports IP and domain name visiting.

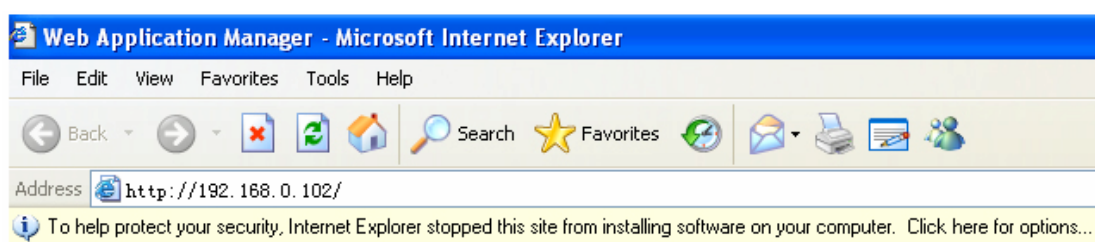
RESTRICTION CONDITION:

To ensure stable remote viewing of DVR, we recommend Windows XP or Windows Vista as operation system for your PC. Recommended browser is IE 6.0 or IE 7.0.

3.2 USER LOGIN

Input the DVR local IP in IE browser; if the web port number is set as 80, directly input IP address into IE address column; if the port is changed, you should add the port number after IP address: E.g. when IP is 192.168.0.102, set port is 8088, you should input http://192.168.0.102:8088.

When the net is connected, IE will automatically download the file to PC as following,

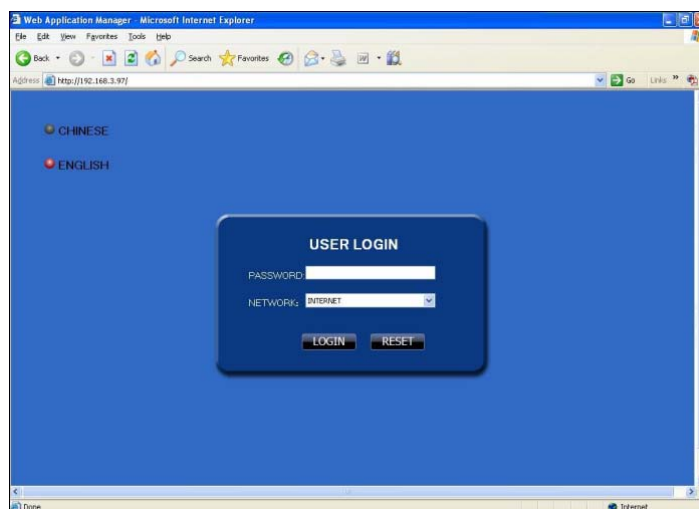


[If your browser do not support to download the ActiveX control, please click here.](#)

The process will last for 1~2 minutes.

Please click “If your browser does not support the ActiveX to download, please click here” when downloading is not successful.

System will automatically enter GUI as follows:



Select English interface from the top left side. Input username and password to enter the system. The username and passport are the same as the ones set in DVR.

PASSWORD: Administrator has all authorities; operator has limited authorities to

only view and playback. Please change the Device No. and default password regularly for system security.

NETWORK: LAN/WAN

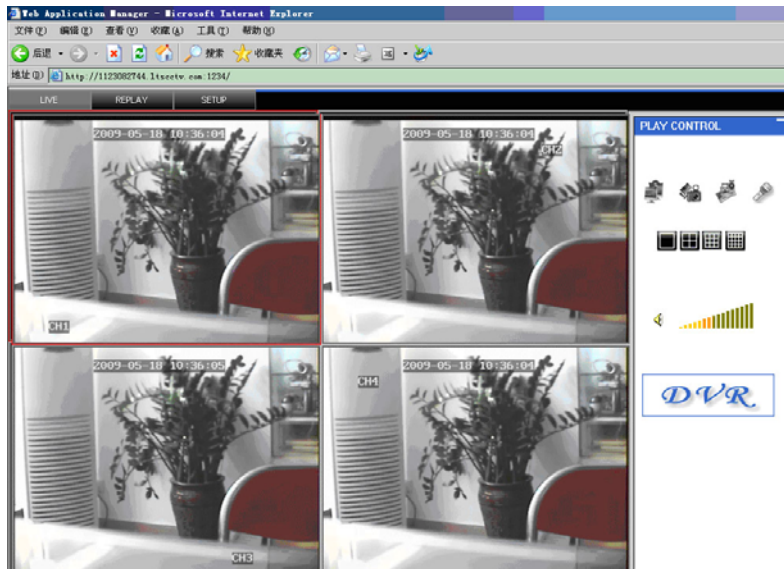
Remark: If you connect the device in WAN, the IP should be a public IP.

3.3 OPERATION INTERFACE

Options in the main interface include Live View, Playback and Setup. Click any option to access.

3.3.1 LIVE

Click  to enter into the interface as follow



3.3.1.6 PLAY

Move cursor to the icons, it will highlighted when selected



Open all windows



Capture picture, save in local disk, system save default route is C:/DVR



Quick-start to record video on all channels. The left upper corner of each channel has normal recording video symbol **【R】**; Click icon to switch between single

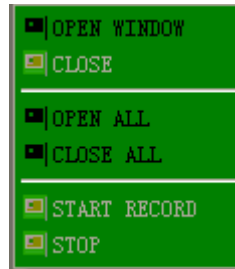
screen  /quad  /nine  /16 split .



Volume adjust button

3.3.1.7 OTHER OPERATION

1. Select one channel at preview screen (the selected channel's frame will be change to RED), double click left key, enter to the selected channel single screen display.
2. Click one Chanel via left key at preview screen, then click right key, will occur window shortcut Menu, see below picture

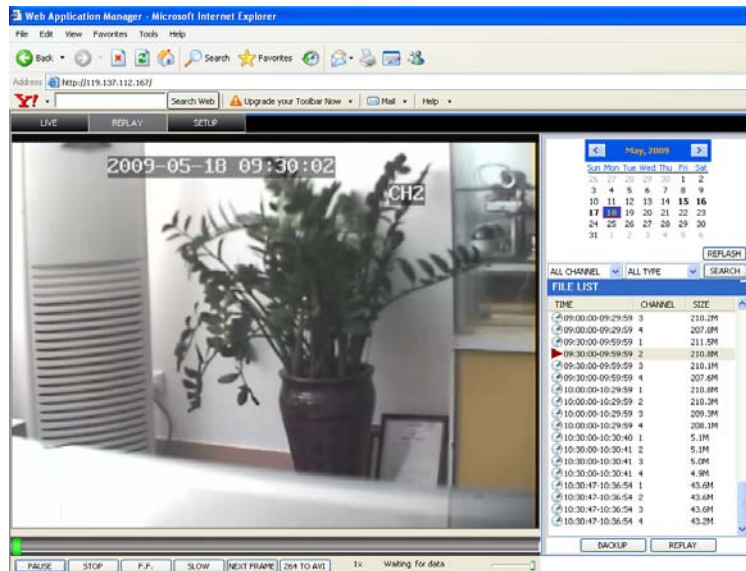




You can open, shut down and start this channel's record via shortcut menu.

3. Click right key at one live view screen, click" open all windows" or " close all windows", will quickly open/close all windows.

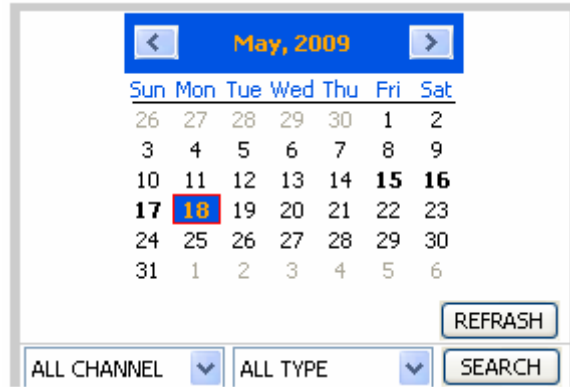
3.3.2 REPLAY

Click" REPLAY" to enter into playback interface.



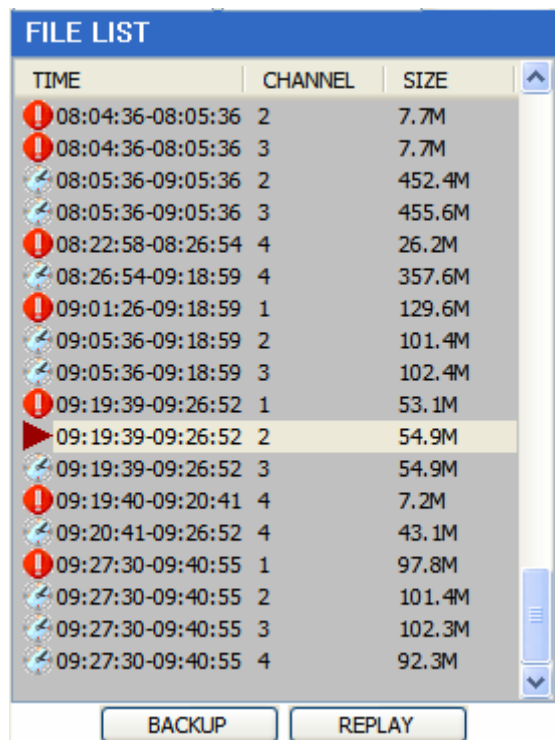
Click right up of calendar interface  and , to setup the month for searching;


Click "REFRESH" at the calendar interface will display the recording information of current month.

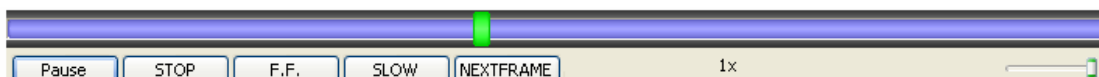


The highlighted date indicates video was recorded on that day. RED FRAME means the date is system date, click the date will search that days' recording file list. For example, the above picture display 2008, Dec. 3rd,4th,5th,6th,8th,9th,10th,11th,12th,17th,18th have recorded video, and system date is 18th, Dec, 2008, current search date is 17th, Dec.

Select channel and type at the bottom of the calendar. Click "SEARCH" and the result will display as follows:.



Double click one of the listed recorded video to playback. The file icon will change to , and the following picture will appear:



The above purple progress bar shows download progress, green progress bar shows

playback progress

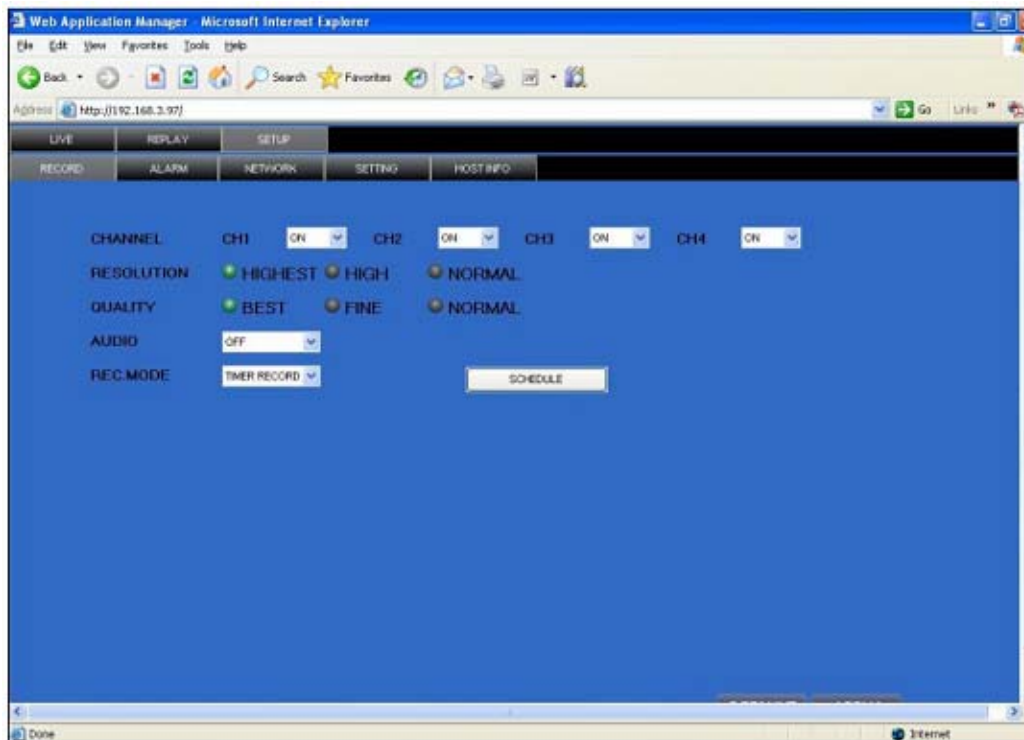
- Switch between pause/play
- Stop play
- Fast play
- Slow play
- Pause at next frame

3.3.3 SETUP

Click to enter into setup interface, this interface includes record, alarm, network, setting and system information.

3.3.3.1 RECORD

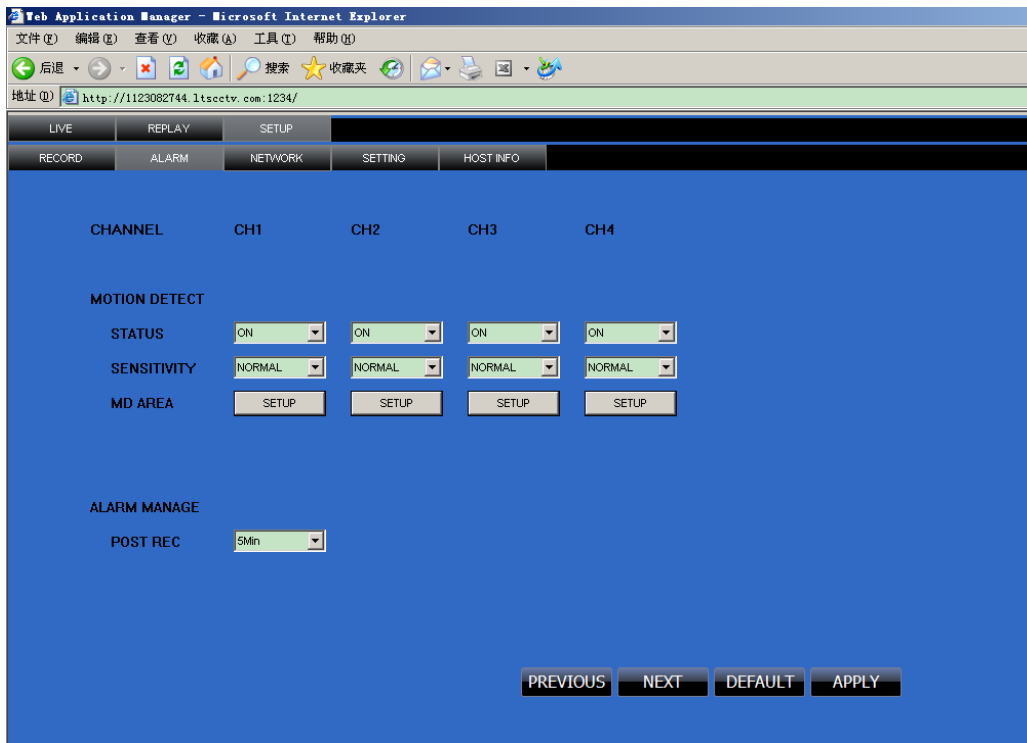
Click to enter into setup interface; you can check the parameter settings as in GUI of DVR.




3.3.3.2 ALARM SETTING

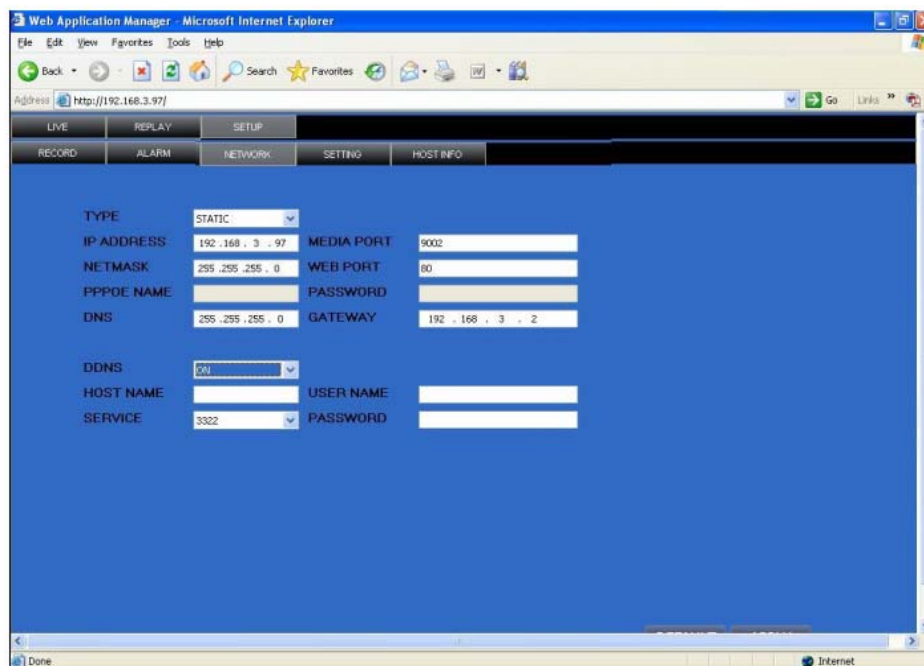
Click "ALARM" to enter into setup interface; you can check the parameter settings as

in GUI of DVR.




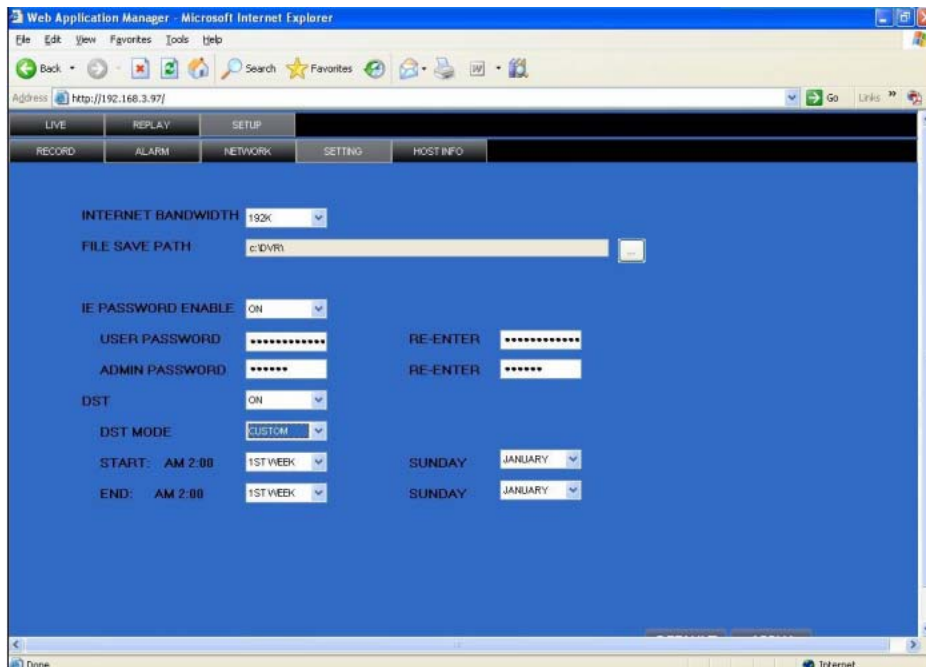
3.3.3.3 NETWORK

Click  to access setup interface; you can check the parameter settings in GUI of DVR.



3.3.3.5 SETTING


Click  to access setup interface; you can check the parameter settings in GUI of DVR



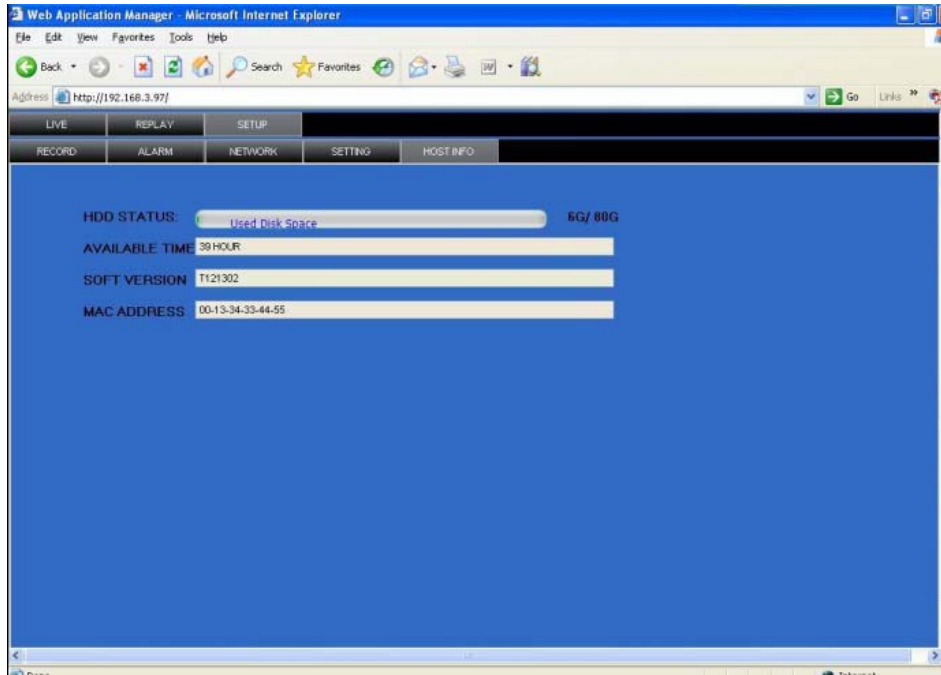
BANDWIDTH: Set the bandwidth in kbps (128k、192k、256k、384k、512k、1024k) that you want to allocate for traffic that matches the internet. This bandwidth does not include audio.

FILE SAVE PATH: the save path of captured picture and recording video. IE login password and DST settings you can set as DVR setting.

3.3.3.6 HOST INFO

Click  to access system information interface (see below picture).

This interface includes HDD status, remain record time, firmware version and MAC Address. All the information is fixed.



4. DVR INSTALLATION GUIDELINE

4.1 PRODUCT OVERVIEW

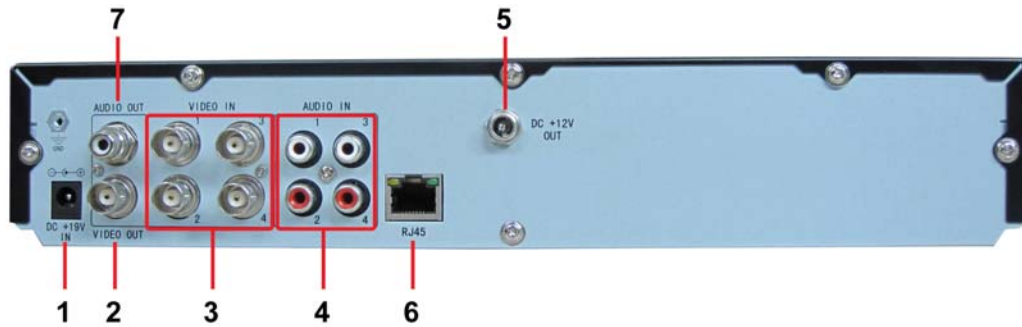
1. THE DEFINITION OF BOTTONS AND CONNECTORS ON FRONT PANEL



Buttons on Front Panel

NO	TYPE	NAME	Instruction
1	Standby	STANDBY	System standby button
2	Control button	Direction key	direction key include: up【▲】、down【▼】、left【◀】、right【▶】 four buttons, which can move cursor to setup
		OK	Confirm operation
		MENU/EXIT	Enter into main menu under live view, or exit sub menu
3	Status indicator	REC	Recording
		ALM	Alarm
		ERR	Error
		FULL	On means the HDD is full.
		HDD	HDD Status
		100M	On means network is 100M
		LINK	On means network has connected
	POW	Power	
	IR receiver	IR	Remote control receiver
4	USB2.0	USB2.0	USB2.0 for thumb drive to backup
5	USBMOUSE	USB1.0	For USB mouse

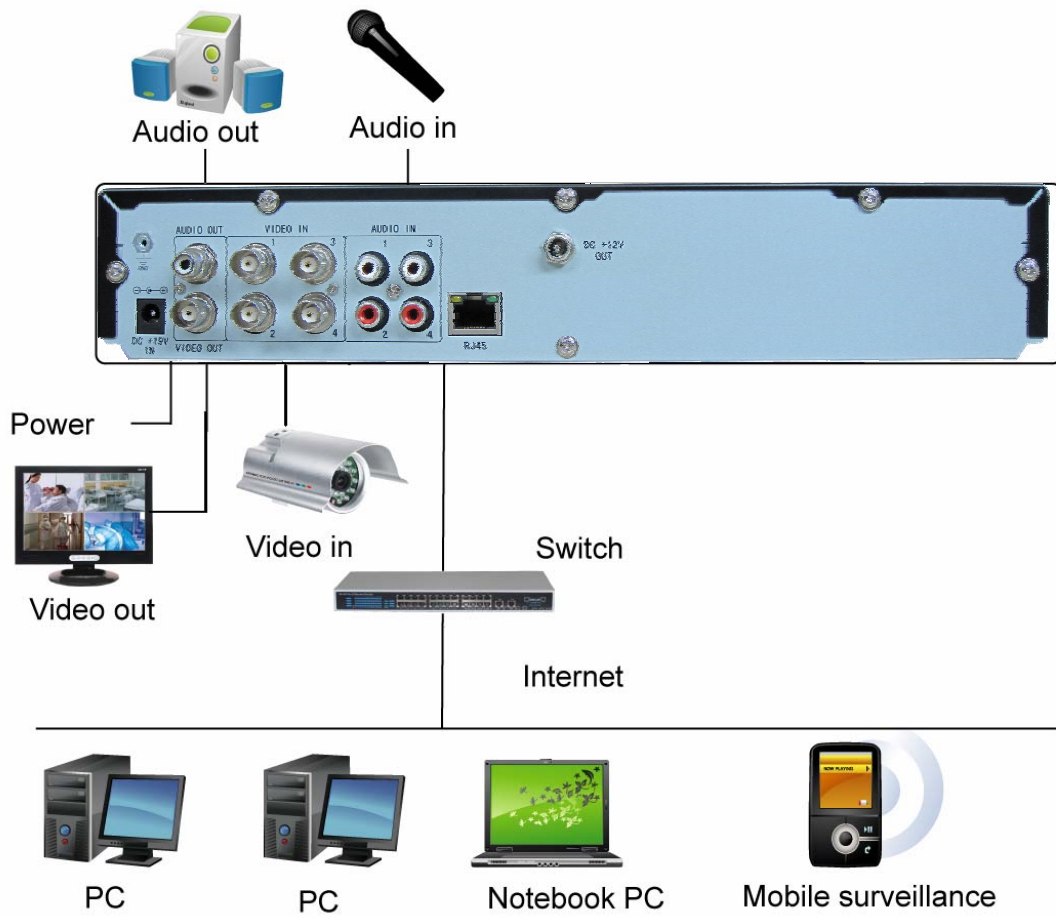
2. THE DEFINITION OF BUTTONS AND CONNECTORS ON REAR PANEL



Connectors on Rear Panel

Item	Physical connector	Connector description
1	POWER input	DC 19V / 3.42A
2	Video output	Two video output for connecting TV or monitor (BNC)
3	Video input	For connecting analog video signal input (BNC)
4	Audio Input	For connecting audio signal
5	+12V	Power supply for DC relay and the current is 2 A (make sure short circuit will not happen)
6	Network	For Ethernet connection
7	Audio output	For audio output connection

3. SYSTEM NETWORK DIAGRAM



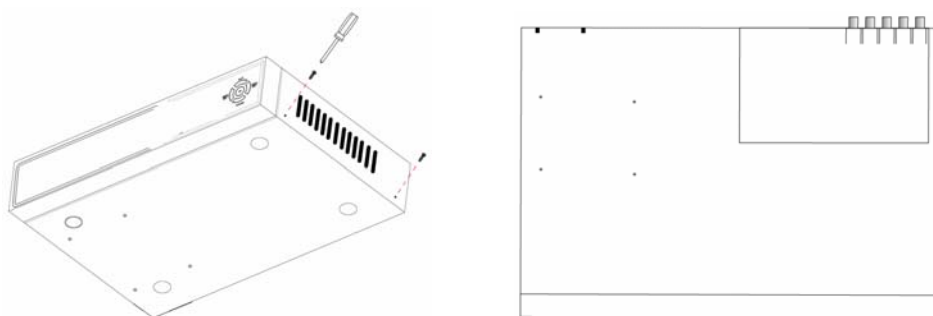
4.2 HDD INSTALLATION

Caution:

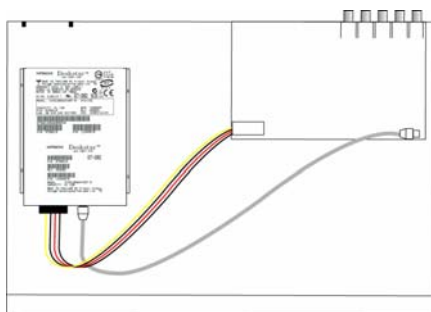
When working with electrostatic sensitive devices such as hard disk or DVR unit, make sure you use a static-free workstation. Any electrostatic energy coming in contact with the hard disk or DVR can damage it permanently.

Please install the HDD with the following steps:

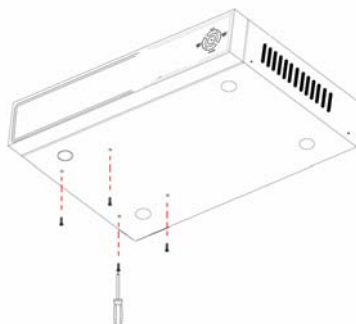
- 1) Open the upper cover of the DVR and you will see one HDD plate as follow:



- 2) Connect HDD cables as follow:



- 3) Affix HDD on HDD plate as indicated below with the screws.



- 4) Install the HDD plate back into DVR and close cover.

Notice: New installed HDD should be formatted before recording.

5.FAQ

If your problem is not listed below, please call our toll-free number for more technical support.

1. Question: Why DVR is not working after starting?

Answer:

- ✧ Check the adaptor input
- ✧ Check the on-off power line, is it well-connected?
- ✧ Check the power on-off
- ✧ Check the upgrade procedure
- ✧ Check the main board of DVR

2. Question: Why DVR is rebooting automatically or stopped after starting the DVR for several minutes?

Answer:

- ✧ Instability or low input voltage
- ✧ Bad track hard drive or the line of hard drive is bad
- ✧ On-off power supply is not enough
- ✧ The front-end video signal instability
- ✧ High temperature, too much dust, too bad the DVR operating environment
- ✧ The main board is not well-connected with other boards
- ✧ The hardware of DVR is defective

3. Question: Why there is no output of single channel, multi channel or all channel video?

Answer:

- ✧ Please check the adaptor of camera whether to see if it is well-connected
- ✧ Please check the cable for connecting video input/output in the back panel of DVR
- ✧ Please insert the video source directly into the display device and check if they are causing the problem.

- ✧ Check the brightness of the picture and bring it back to its original default setting
- ✧ No video input signal or too weak
- ✧ Display settings in the preview set to be closed
- ✧ The hardware of DVR is defective

4. Question: Why DVR cannot record after startup and the interface is showing "H"?

Answer:

- ✧ Make sure power adaptor is DC 19V
- ✧ Make sure HDD is formatted
- ✧ Check the power and data connection cables of the HDD
- ✧ The HDD is defective
- ✧ The SATA port is not working

5. Question: What is meaning of "R" "M" "I" "H" showed in interface?

Answer:

- ✧ "R" means the channel is recording
- ✧ "M" means the channel is on motion detection
- ✧ "I" means the channel is on alarm
- ✧ "H" means there is either no HDD. the HDD is bad or the HDD is full

6. Question: Why DVR is having problem with real-time images, such as bad image color or serious brightness distortion?

Answer:

- ✧ If PAL and NTSC is not correctly selected on the BNC output, the images will be in black and white
- ✧ DVR is not compatible with monitor
- ✧ The video transmission distance is too far
- ✧ The setting of DVR color, brightness and so on are wrong

7. Question: How come there is no audio sound when monitoring?

Answer:

- ✧ Check sound box or speaker functions. Also check possible short circuit.

- ✧ Audio source may be connected to the video channel. You can click to full-screen to check.
- ✧ The hardware of DVR is defective

8. Question: How come there is no audio sound when playing back?

Answer:

- ✧ Setting problem: open audio-video item
- ✧ Check the audio to see if it is closed in playback interface

9. Question: Why system time is not correct?

Answer:

- ✧ Wrong setting or user did not click "Edit" to confirm
- ✧ Battery is not connected properly
- ✧ Battery is dead. Please change.

10. Question: Why the “Stop recording” by the right mouse button does not work, and how to stop recording?

Answer: :

- ✧ The “Stop recording” by the right mouse button is only suitable for Manual recording. It can't stop recording when it's in “start recording” or the video in video plan.
- ✧ If you want to stop recording, please set the time is not recording.

11. Question: "Stop recording" function by the right mouse button does not work. How to stop recording?

Answer:

The "Stop recording" by the right mouse button is for Manual Recording only. It can not stop recording when it is in "start recording" or the video is in video plan. If you want to stop recording, please set the time to not recoding.

12. Question: Why Motion Detection is not working?

Answer: :

- ✧ The setting of motion detection area is not correct
- ✧ Sensitivity is too low

13. Question: How come there is CD-writer /USB backup error

Answer:

- ✧ The data exceeds the capacity of backup device
- ✧ The backup device is incompatible
- ✧ The backup device is damaged

14. Question: Why Remote Control is not working?

Answer: :

- ✧ The address of remote control is not correct
- ✧ The distance of remote control is too far or the angle is too biased
- ✧ Remote control batteries run out
- ✧ Remote control is damaged or the front panel of DVR is damaged

15. Question: How come WEB cannot login?

Answer:

- ✧ Please check the network to see if it is connected. Check if LINK or 100M LED is displayed normally on the panel; use ping xxx.xxx.xxx.xxx (DVR IP) to check if the Internet is linked properly.
- ✧ Recommended to use Windows XP or Vista operating system, also use IE6.0 browser or IE7.0 browser
- ✧ ActiveX control has been blocked. Please manually install ActiveX control again.
- ✧ Please install DX8.1 and upgrade your video card driver

16. Question: How come there is no picture or picture is not clear when you preview the recording or playback the recording via IE?

Answer:

- ✧ If you access DVR by IE, please choose "Wan" in "web environment"
- ✧ Please try "Close windows" by the right mouse button, and try "Open windows" again

17. Question: How come it displays "other members are setting....." while setting DVR by IE?

Answer:

- ✧ It probably means someone else is setting the DVR. Please check the DVR

configuration interface or exit DVR.